

Rodeo Park Office Building for Lease

1474 Rodeo Road, Santa Fe, New Mexico



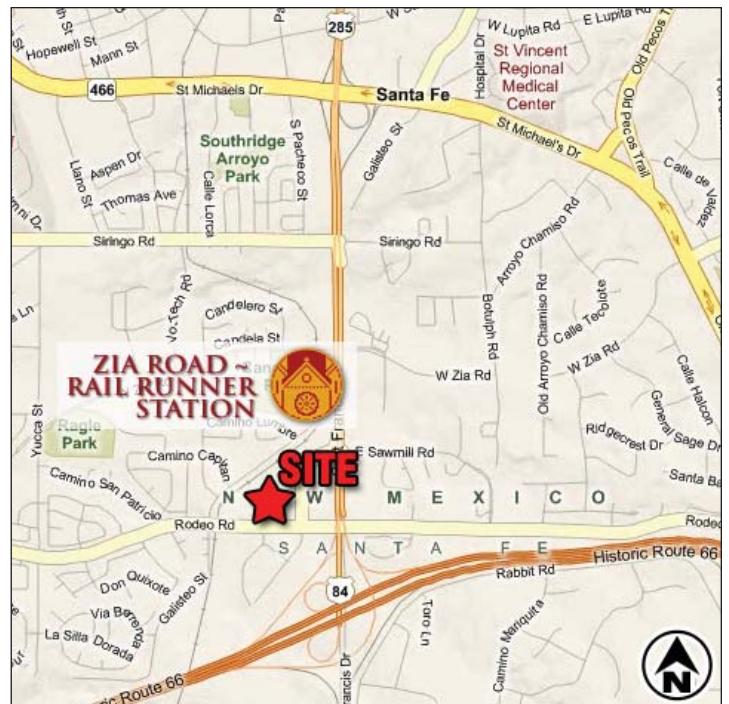
PROPERTY: 1474 Rodeo Road is just west of St. Francis Drive at the I-25 interchange.

AVAILABLE: 76,978± sq. ft. Office Building
Ground Floor - 45,000± sq. ft.
2nd & 3rd Floors - 15,993± sq. ft. floor plates

LEASE RATE: \$15.50/sq. ft. + NNN

FEATURES:

- Convenient location
- Within walking distance to the Zia Station Rail Runner stop
- 4.3:1000 Parking ratio
- Large open floor plan offers flexibility



FOR MORE INFORMATION CONTACT:

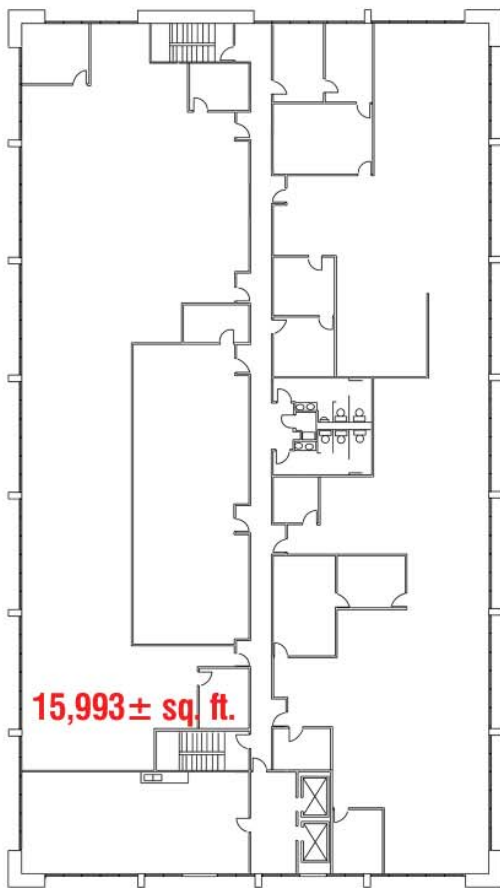
Tom Jenkins
tom@reanm.com

Mark Friedman, CCIM
mark@reanm.com

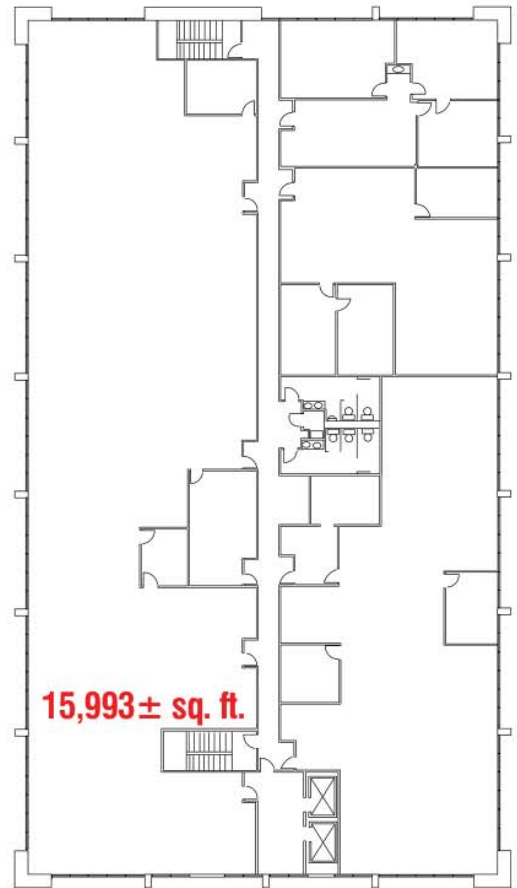
2001 Mountain Road NW, Albuquerque, NM 87104
www.reanm.com (505) 880-8100



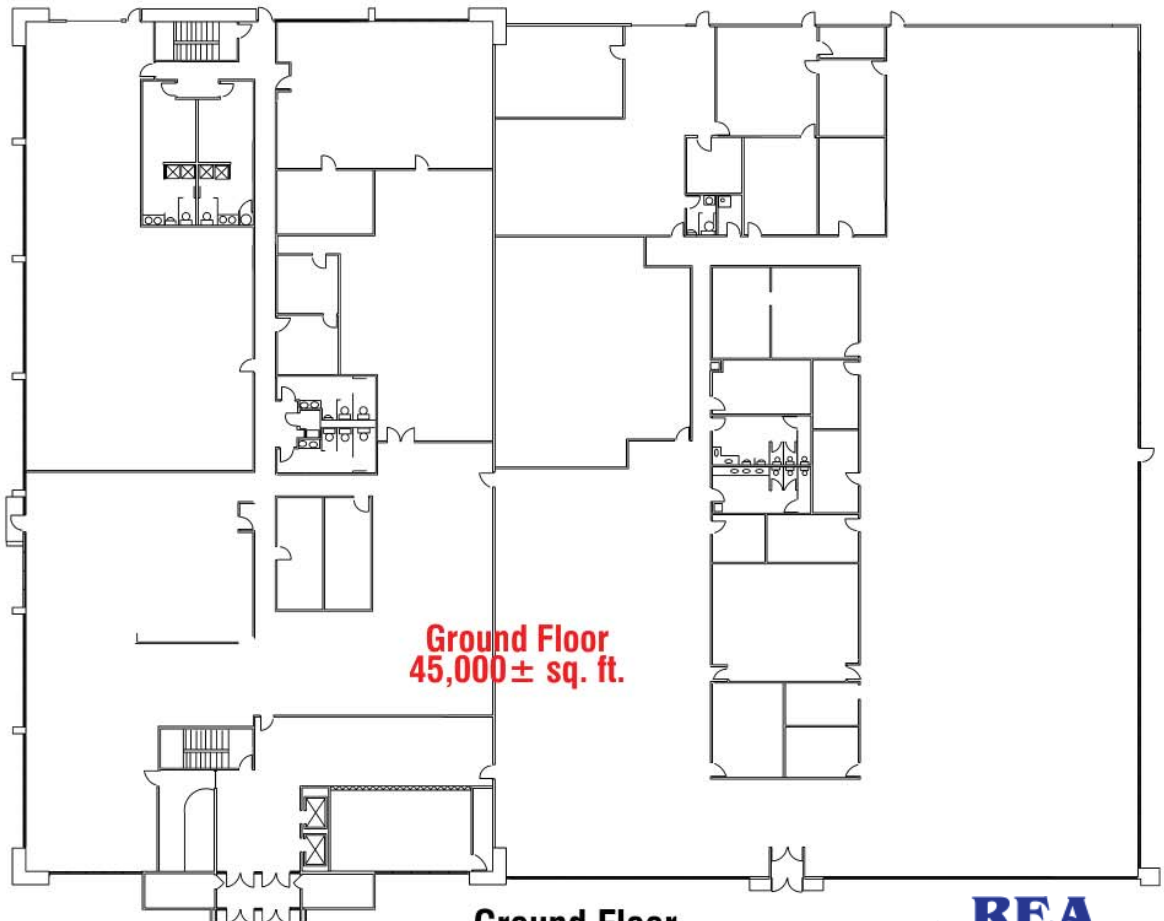
The information provided herein has been obtained from sources believed reliable. While we do not doubt the accuracy, we have not verified it and make no guarantee, warranty or representation about it. It is your responsibility to independently confirm its accuracy and completeness.



2nd Floor



3rd Floor



Ground Floor